



# **UKSIF London Conference**

16 November 2017

The sustainable investment and finance event  
for analysts and researchers

---

Produced by

# **UKSIF**

UK Sustainable Investment  
and Finance Association

# Introduction

## About the London Conference

An UKSIF sustainable investment and finance event for analysts and researchers.

The agenda has been designed with the support of the UKSIF Analyst Committee and other member analysts to ensure a truly member-led SRI/ESG event designed by analysts for analysts.

Free to UKSIF members the event will focus on themes and issues that are material to investment performance and provide practical support for advancing ESG integration.

Please send event feedback, ideas and comments resulting from this year's discussions to Ellie Stewart at [ellie.stewart@uksif.org](mailto:ellie.stewart@uksif.org)

## Welcome



Simon Howard, Chief Executive, UKSIF

*"I am delighted to welcome you to UKSIF's first London Conference.*

*We are running the event for two key reasons. Most importantly it was requested by a wide variety of UKSIF members; secondly it is aimed at the analyst community, who need (and offer) particular insight into sustainable and responsible finance issues.*

*More widely the momentum is with the sector and UKSIF. This week has seen both the Corley report on Social Impact Investing, which recommends that the Government work with UKSIF on Good Money Week, and a consultation on fiduciary duty from the High Level Group on Sustainable Finance which we support through our funding of Eurosif. Irrespective of Brexit, the latter consultation will influence UK thinking and shape markets of great interest to UKSIF members. It's a busy time and we hope the conference helps you capitalise on the opportunities that are opening up."*

## Connect

@UKSIF @UKSIFSimon @UKSIFFergus #LonConf17

Wifi: Username: [MOL Events](#) Password: [Londinium](#)

Thank you to our event partners



# Programme

London Conference, 16 November 2017

8.30 - 9.00am	<b>Registration and refreshments</b>	
	Activity Space	
9.00 - 9.15am	<b>Welcome and introduction</b> Simon Howard, Chief Executive, UKSIF	
	Activity Space	Studio
9.20 - 10.50am	<b>The Blue Economy</b>  <b>D. Michael Adams</b> , President, Ocean Assets Institute <b>Simon Dent</b> , Manager, Sustainable Oceans Fund <b>Samuel Mary</b> , Senior Sustainability Research Analyst, Kepler Cheuvreux	<b>TCFD</b> – scenario analysis and value-at-risk estimations Sponsored by MSCI  <b>Dr Jean-Christian Brunke</b> , Senior Consultant, The Co-Firm <b>Jillian Reid</b> , Principal, Mercer Responsible Investment <b>Dr Manish Shaktwippee</b> , Vice President, New Models and Methodologies, MSCI <b>Jakob Thomä</b> , Director and Founder, 2° Investing Initiative Chair: <b>Veronique Menou</b> , Executive Director, Head of ESG Index Methodologies, MSCI
	Seminar Room	
10.50-11.10am	<b>Coffee break</b>	
	Activity Space	Studio
11.10-12.10pm	<b>SDGs</b> - frameworks and measuring impact  <b>Adam Ashcroft</b> , Client Relationship Manager, Vigeo Eiris <b>James Coldwell</b> , Investor Engagement Officer, ShareAction <b>Kajetan Czyz</b> , Programme Director, Sustainable Finance, University of Cambridge Institute for Sustainability Leadership Chair: <b>Nikki Gwilliam-Beeharee</b> , Head of ESG Research, Vigeo Eiris	<b>Blockchain</b> - How will Blockchain reshape the SRI/ESG investment industry?  <b>Remy Briand</b> , Managing Director, Head of ESG, MSCI <b>Clara Melot</b> , SPOTT Engagement and Impacts Manager, Zoological Society of London <b>Duncan Westland</b> , Solution Architect – Blockchain, Global Blockchain, Ernst & Young Chair: <b>Fergus Moffatt</b> , Programme Director and Head of Public Policy, UKSIF

	Activity Space	Studio
12.15-1.15pm	<p><b>Cybersecurity</b> Sponsored by Sustainalytics</p> <p><b>Beijia Ma</b>, Bank of America Merrill Lynch <b>David Sneyd</b>, Associate Director, Governance &amp; Sustainable Investment, BMO Global Asset Management (EMEA) <b>Sonja Wallenborn</b>, Manager, ESG Industrials &amp; Infrastructure Research, Sustainalytics Chair: <b>Fergus Moffatt</b>, Programme Director and Head of Public Policy, UKSIF</p>	<p><b>What does proper ESG integration look like?</b></p> <p><b>Mais Callan</b>, Founder &amp; MD, Impactive Associates Chair: <b>Charlene Cranny</b>, Programme Manager, UKSIF</p>
	Seminar Room	
1.15-2.15pm	<p><b>Lunch</b></p>	
	Activity Space	Studio
2.15-3.15pm	<p><b>Man versus machine</b> - Automation and labour rights</p> <p><b>Marie Fromaget</b>, Investment Analyst – SRI, Kepler Cheuvreux <b>Susan Winterberg</b>, Associate Director, Inclusive Economy, BSR Chair: <b>Charlene Cranny</b>, Programme Manager, UKSIF</p>	<p><b>Quant investing and ESG</b> - how is it done?</p> <p><b>Andreas Feiner</b>, Head of ESG Research and Advisory, Arabesque Asset Management <b>Neil McIndoe</b>, Head of Environmental Finance, Trucost, part of S&amp;P Dow Jones Indicies <b>Bart van der Grient</b>, Quant Researcher, Robeco Chair: <b>Fergus Moffatt</b>, Programme</p>
	Activity Space	
3.20-4.30pm	<p><b>New Ideas</b> - short presentations on recent reports</p> <p><b>D. Michael Adams</b>, President, Ocean Assets Institute <b>Carole Ferguson</b>, Head of Investor Research, CDP <b>Maria Lettini</b>, Director, FAIRR Initiative <b>Michael Lewis</b>, Managing Director and Head of ESG Thematic Research, Deutsche Asset Management</p>	
4.30-5.00pm	<p><b>Closing remarks</b> Simon Howard, Chief Executive, UKSIF</p>	
5.00-7.00pm	<p><b>Drinks reception</b> Sponsored by Vigeo Eiris</p>	

# Speaker biographies



## **D. Michael Adams, President, Ocean Assets Institute**

D. Michael Adams established the non-profit Ocean Assets Institute (OAI) to help finance solutions for healthy oceans and coastal communities. Michael founded The Journal of Investing in 1987 and Pedigree Investments Ltd in 1992. He researched and raised capital for alternative investments until 2010, when he became active in sustainable finance. Michael and his wife, Anyes, funded coral reef studies and participated in the launch of the Bahama Lobster FIP when they lived in the Bahamas during 2006-2009, which provided the impetus to found OAI.

Michael holds a MSc Business Policy from Columbia University, a BA from Bates College and lives with his family in Switzerland.



## **Adam Ashcroft, Client Relationship Manager, Vigeo Eiris**

Adam joined Vigeo Eiris in 2016 as Client Relationship Manager and is the focal point for products related to the Sustainable Development Goals. Adam recently moved back to the UK having spent 16 years living and working in the Middle East in both development and sustainability roles.

Prior to joining Vigeo Eiris, Adam worked for a sustainability management consultancy in the UAE and Jordan, working on both responsible investment and traditional sustainability strategy initiatives.

Having spent a number of years working for the UN World Food Programme in Dubai, and being deployed to humanitarian emergencies around the world, Adam has a keen sense of the development issues that increasingly require the attention of the corporate world, and believes merging philanthropic principles with the private sector profit motive is the most effective way of addressing social and environmental problems.



## **Remy Briand, Managing Director, Head of ESG, MSCI**

Remy Briand is responsible for MSCI's ESG (environmental, social and governance) products. He is a member of the firm's Executive Committee and Chairman of the MSCI Index Policy Committee, which oversees all major editorial decisions on MSCI indexes.

Remy Briand has been leading MSCI ESG Research since its creation in 2010. Remy also served until February 2017 as global head of research for MSCI where he led a team of 150 researchers designing indexes, analytics and risk models for institutional investors. As head of index research for 10 years, he managed the expansion of the MSCI Global Indexes to cover 80 developed, emerging and frontier markets. He also initiated and led the development of MSCI's market leading factor indexes.

Mr. Briand joined MSCI, then part of Morgan Stanley, in 2001 from Credit Lyonnais Asset Management, where he was equity portfolio manager and head of research. He began his career as a private equity analyst at Credit Lyonnais.

Remy holds an MSc in Computer Sciences from INSA (Lyon) and an MBA from HEC (Paris).



## **Dr Jean-Christian Brunke, Senior Consultant, The Co-Firm**

At the CO-Firm GmbH, Dr Jean-Christian Brunke supports projects to increase energy efficiency and climate performance of industries for the financial and energy sectors. He specializes in techno-economic technology assessment and modeling of optimization potentials.

From 2012 to 2016, Jean-Christian was a research associate at the Institute of Energy Economics and the Rational Use of Energy (IER) at the University of Stuttgart. Sample projects include the design of the EU emissions trading scheme after 2020 with a focus on industrial competitiveness, developing a funding scheme for highly efficient cross-sector technologies for waste heat recovery and heat integration and the techno-economic analysis of industrial energy efficiency measures for Energy Service Companies (ESCO). Before that, Jean-Christian worked for EnBW AG for two and a half years with a focus on energy trade and while being with EDF London, he concentrated on risk and process management.

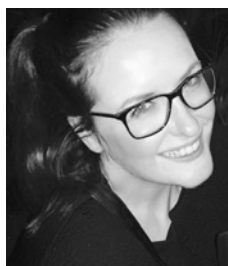


# Speaker biographies



## **James Coldwell, Investor Engagement Officer, ShareAction**

James joined ShareAction in January 2017 as part of the Workforce Disclosure Initiative, an investor programme to increase transparency and improve practices in global workforces. He previously worked for a social finance intermediary, and has been an elected councillor since May 2016. He holds a BA in History with French from the University of York and an MPhil in Modern European History from the University of Cambridge.



## **Charlene Cranny, Programme Manager, UKSIF**

Charlene joined UKSIF in September 2013 as Programme Manager of the Analyst Programme with responsibility for catalysing debate on emerging environmental, social and governance issues and assisting members to develop their practice. Charlene is also responsible for PR and communications. Before UKSIF, Charlene worked on cause and policy-led campaigns and marketing for charities, think-tanks and campaign groups such as Centre for London, IPPR and 38 Degrees. Charlene has a degree in Politics and Philosophy from the University of York.



## **Kajetan Czyz, Programme Director, Sustainable Finance, University of Cambridge Institute for Sustainability Leadership**

Kajetan Czyz has a background in financial risk modelling, index design, corporate and policy engagement and has expertise in the energy sector transition. Most recently, he headed the Climate Aggregation Platform (a project with UNDP), green bond market development in India and the Green Infrastructure Investment Coalition at the Climate Bonds Initiative. Kajetan brings a decade of experience from across the financial sector to the CISL team, ranging from work with stock exchanges (WSE), index design (for FTSE, S&P) and banking (RBS, Triodos) to asset management of both listed securities and private equity (BMO Global Asset Management). As a member of the Institutional Investors Group on Climate Change he represented the European investment industry at the Paris Climate Summit.



## **Simon Dent, Manager, Sustainable Oceans Fund**

Simon has more than 20 years energy and commodity related experience with extensive commodity origination experience in both physical and financial commodity markets and in managing and executing long-term structured transactions.

Previously a Managing Director in the BNP Paribas Commodity Group where he worked for the bank for over 12 years in both Europe and North America. He setup and led the global emissions sales and environmental trading activity for the bank.

Simon joined Althelia Climate Fund in 2014 and is applying his commercial and structuring skills towards developing project led impact investments. He is focused on sustainable marine supply chains and fisheries as well as sustainable land use investments.

Simon holds a Masters in Corporate and International Finance from Durham University and a Business and Economics degree from Edinburgh University.



## **Andreas Feiner, Head of ESG Research and Advisory, Arabesque Asset Management**

Andreas Feiner is a founding Partner of Arabesque. He is responsible for Arabesque's Sustainability Process, which is the basis for all of Arabesque's flagship products, and Bespoke Solutions, which offers tailor-made products based on investors' individual preferences.

In 2015, Andreas co-authored the report 'From the Stockholder to the Stakeholder', a meta-study conducted by Arabesque and the University of Oxford which examines the links between sustainability and financial performance. It can be accessed freely ([link](#)).

Prior to founding Arabesque, Andreas was Head of Distribution for Barclays Saudi Arabia. Previous positions include Structured Product Sales for Germany, Austria, and Switzerland at Barclays, as well as Equity Research and later Portfolio Management at Metzler Asset Management.

Mr. Feiner holds a BS in Business Administration from the Frankfurt School of Business and Finance (Germany).

# Speaker biographies



## **Carole Ferguson, Head of Investor Research, CDP**

Carole Ferguson leads CDP's investor research arm. She is responsible for expanding CDP's research capability across sectors and markets; providing in depth analysis of the environmental risk and opportunity exposure of companies for consideration within the investment process. She has extensive experience in finance and sustainability having worked both on the buy and sell side as an analyst and fund manager. She worked at Societe Generale Asset Management for close to nine years setting up their responsible investment strategy and research, subsequently working within the fund management team with responsibility for the resources and utility sectors. More recently she worked as a sell side mining analyst for a boutique specialising in resources. Prior to working at SGAM, Carole worked in the convertibles and structured product groups for investment banks such as JP Morgan. She has just completed an MSC in Economics and Policy on Energy and the Environment at UCL and also holds an MBA from London Business School.



## **Marie Fromaget, Investment Analyst - SRI, Kepler Cheuvreux**

Marie Fromaget has joined Kepler Cheuvreux as an ESG project coordinator and analyst covering thematic linked to human capital. Prior to this, she worked in the Sustainable Capital Markets service at BNP Paribas and in the Green Certificates and Carbon Credit sales business. She has a Master's in Energy Finance Carbon from Paris Dauphine as well as a Magistère in International Economics and Finance.



## **Nikki Gwilliam-Beeharee, Head of ESG Research, Vigeo Eiris**

As Head of ESG Research at Vigeo-Eiris, Nikki oversees eight ESG sector teams (85 analysts) to ensure the delivery of the ESG Research (4,000 companies with a global coverage). In this role she also manages the expertise development, visibility and clients responses linked to ESG Research. She joined Vigeo as an ESG analyst in the Food and Health team in 2010, and between 2013 and 2016 she was the Research Manager of this team. Prior to this, she undertook internships with the Cooperative Investment Responsible Investment Department (Manchester) and with Covalence EthicalQuote (Geneva). Nikki completed her Bachelors degree in Economics and Social Anthropology at the University of Manchester and Masters degree in Human Rights at the University of Sussex.



## **Simon Howard, Chief Executive, UKSIF**

Simon Howard joined UKSIF as Chief Executive in May 2013. Simon is a former Chief Investment Officer who has over twenty years of investment management experience. During a City career that started in 1990, he has been Group Chief Investment Officer at Liverpool Victoria, Head of Investments at Friends Provident and Managing Director at 3i Asset Management. Prior to joining UKSIF, Simon was Head of Sustainable Financial Markets at the charity Forum for the Future.



## **Maria Lettini, Director, FAIRR Initiative**

Maria joined the FAIRR Initiative as Director in September 2016. She is responsible for engaging institutional investors and related stakeholders around the material ESG risks and opportunities inherent in today's global food system, with particular focus on intensive livestock farming and diversification of protein supply chains. Prior to this, she spent five years at the UN-supported Principles for Responsible Investment (PRI), engaging with global investors on material sustainability issues and encouraging their incorporation into investment policies and practices. Maria has over twenty years' experience in global investment banking, business and finance, working at both J.P. Morgan and Deutsche Bank. She has been based in San Francisco, New York, Madrid, and most recently, London.

Maria holds a MA (Distinction) in Environment, Politics and Globalization from King's College London and a BA in International Business, Latin American Studies and Spanish from SDSU.

# Speaker biographies



**Michael Lewis, Managing Director and Head of ESG Thematic Research, Deutsche Asset Management**

Michael joined Deutsche Asset Management in 2015 and leads the platforms' ESG and Sustainable Research activities, supporting the Active, Passive and Alternative businesses. Before his current role, Michael was the Global Head of Commodities Research in Deutsche Bank's Global Markets Research division.

He holds an MSc Economics from the London School of Economics & Political Science and a BSc Economics from the University of Bristol.



**Beijia Ma, Strategist, Bank of America Merrill Lynch**

Beijia Ma is a Strategist on the Thematic Investing team at Bank of America Merrill Lynch in London. The global strategy team researches long-term megatrends. This includes addressing thematic issues both from opportunity and risk perspectives – including ageing, big data, bottom billions, climate change, cybersecurity, education, food security, future mobility, green bonds, inequality, millennials, obesity and health & wellness, pandemics, robots & AI, sharing economy, smart cities, virtual, augmented & mixed reality, waste, and water. The team also publishes quarterly "Primer Picks" stock picks and monthly "Theme Watch" tactical strategy reports. She holds a BS with Honours in Biology from Stanford University.



**Samuel Mary, Senior Sustainability Research Analyst, Kepler Cheuvreux**

Samuel is a Senior Analyst on Kepler Cheuvreux's ESG & Sustainability Research team, which he joined in 2011. His responsibilities include: the Thematic and Impact Investing research product; ESG Corporate Access; and Kepler Cheuvreux's in-house ESG integration framework and methodologies that integrate ESG issues into fundamental equity analysis for specific sectors.

He holds a master's degree in management from ESCP Europe, with a specialisation in Finance.

He was the number-one ranked individual for SRI Research, based on UK Asset Managers Views (Extel 2017 Awards).



**Neil McIndoe, Head of Environmental Finance, Trucost, part of S&P Dow Jones Indices**

Neil has been with Trucost since 2004. He works principally with financial institutions to enable them to embed natural capital into traditional financial analysis and product development. He has worked extensively with Standard & Poor's to create a global series of index products that are adjusted to reduce risk from increasing carbon costs. A recent project in China saw a similar index created for the Shanghai Stock Exchange. In the UK he has worked with Virgin Money on their Climate Change fund and with Lloyds Bank on taking company environmental performance into account in loan decisions.

Previously Neil had a career in the IT industry with Hewlett-Packard. He is an economics graduate and a member of the Society of Business Economists.



**Clara Melot, SPOTT Engagement and Impacts Manager, SPOTT**

Clara Melot joined the Zoological Society of London in June 2016, where she works within the Business and Biodiversity programme on the development of SPOTT. Launched in 2014, SPOTT.org is an online platform, which provides independent transparency assessments of some of the world's largest palm oil, timber, pulp and paper companies against a set of 125 ESG indicators. Clara leads on SPOTT's engagement with the finance sector and buyers to further the sustainable commodity production and corporate transparency agendas. Before joining ZSL, Clara was a Project Officer in the Climate and Forest team at ClientEarth, where she supported a project aimed at tackling illegal timber trade through law and governance frameworks.

Clara holds an MSc in Environmental Policy and Regulation from the London School of Economics and Political Science and an MRes from CELSA, La Sorbonne University's Graduate School of Communication.



# Speaker biographies



## **Veronique Menou, Executive Director, Head of ESG Index Methodologies, MSCI**

Véronique Menou is Global Head of ESG Portfolio & Index Research within MSCI ESG Research. Her role consists in developing and enhancing investment tools that leverage the models, content, data, and expertise of MSCI ESG Research products. She is responsible for the methodologies of existing and new MSCI ESG Indexes as well as ESG Portfolio Analytics. Over the last few months, Ms Menou has been heavily involved in developing ESG thematic indexes including Low Carbon, Women's Leadership, Environmental and Sustainable Impact Indexes.

Ms Menou started her career with Innovest in Paris in 2004 and then moved to Toronto where she was the sector leader for the healthcare industry and the project manager for the first Access to Medicines Index. She then joined the SRI research team at Natixis Asset Management in Paris where she was the lead analyst for the energy and healthcare sectors. Ms Menou holds a master degree in international affairs from Bordeaux School of Management.



## **Fergus Moffatt, Programme Director and Head of Public Policy, UKSIF**

Fergus joined UKSIF in August 2014 as Programme Director and Head of Public Policy. His responsibilities include supporting the Leadership Programme and leading on UKSIF's public policy work. Before joining UKSIF, Fergus worked as a Parliamentary Researcher in the House of Commons for a range of MPs, writing briefings and assisting on a wide variety of policy issues at local, national and European levels. Fergus studied International Relations, and later Law, at Swansea University.



## **Jillian Reid, Principal, Mercer Responsible Investment**

Jillian is a Principal in Mercer's Responsible Investment team. She advises institutional investors on the why and how of adopting a sustainable investment approach. She was project manager and co-author for Mercer's 2015 Investing in a Time of Climate Change. Jillian began at Mercer, in Sydney, in January 2004, transitioning to Responsible Investment in 2011 and to London in 2014. Prior to Mercer, Jillian spent five years at an Australian multi-manager, after beginning her career in teaching.

Jillian holds a Master of Arts in Development Studies; a Bachelor of Arts and Diploma of Education; and a Graduate Diploma in Applied Finance & Investment.



## **Dr Manish Shakhdiwee, Vice President, New Models and Methodologies, MSCI**

Manish Shakhdiwee is Vice President, New Models and Methodologies and Head of Climate Change Research at MSCI ESG Research. Previously, he was head of energy consulting at Ecofirst Advisory Services, and was a risk consultant with Ernst & Young. Manish received his B.Tech. in Mechanical Engineering, and Ph.D. in Sustainable Energy Systems from Indian Institute of Technology Bombay. He was also a resource person in training programs organized by UN HABITAT and UN ESCAP on sustainable urban infrastructure.

At MSCI ESG Research, he has contributed in several research articles on emerging topics ranging from energy security & climate change to tax gap and populism. He has also published several academic research papers in top peer-reviewed journals such as International Journal of Hydrogen Energy, Journal of Scientific and Industrial Research, and Energy for Sustainable Development.



## **David Sneyd, Associate Director, Governance & Sustainable Investment, BMO Global Asset Management (EMEA)**

David joined the Governance & Sustainable investment team at BMO Global Asset Management in 2017 and has over 10 years of ESG experience. Prior to joining the firm David was ESG Manager at Fidelity International, having previously held senior research positions at the governance research agencies ISS and PIRC. David has extensive experience within a European and US coverage on researching ESG topics, engaging with companies at a board/senior management level and dialoguing with policy makers. In addition he has been involved in integrating ESG themes into the investment research and decision-making processes. He holds a BA in Philosophy from Sussex University and an MSc in Philosophy and Public Policy from the London School of Economics.

# Speaker biographies



## **Jakob Thomä, Director and Founder, 2° Investing Initiative**

Jakob Thomae is Director of 2° Investing Initiative Germany. He co-founded the 2° Investing network in New York and Berlin and manages the think tank's research on 2°C scenario analysis for financial institutions and companies. Jakob led the development of the first 2°C scenario analysis tool for financial portfolios, now applied by over 200 financial institutions worldwide. Jakob also leads the organization's partnerships with financial supervisors and governments in Europe, including in Switzerland and the Netherlands.



## **Bart van der Grient, Quant Researcher, Robeco**

Mr. Van der Grient is a Researcher at Robeco's Quant Selection Research team. His areas of expertise include stock selection research, portfolio construction and sustainability integration. Mr. van der Grient started his career in the investment industry at Robeco in 2007. He has published in various journals including the Financial Analysts Journal, and is a guest lecturer at several universities. He graduated cum laude in Quantitative Finance at Erasmus University Rotterdam.



## **Sonja Wallenborn, Manager, ESG Industrials & Infrastructure Research, Sustainalytics**

Sonja Wallenborn manages the team of analysts focusing on equities in the industrials, infrastructure, transportation and commercial services sectors. She assures the quality of the research products, and also engages with companies and clients on key ESG issues in the sectors she oversees.

Sonja has worked in several roles at Sustainalytics, focusing on research, product innovation, and client servicing in the DACH region.

She holds a master's degree in Business (cum laude) from the Erasmus University Rotterdam and a bachelor's degree specialized in Finance (top 3%) from Maastricht University. Sonja is a Certified Expert in Microfinance (CEMF) and a working group member of the Sustainability Accounting Standards Board (SASB).



## **Duncan Westland, Solution Architect - Blockchain, Global Blockchain, Ernst & Young**

Duncan Westland leads EY's Global Blockchain R&D team, developing blockchain technologies in the supply chain and asset management spaces. A recent development by his team was the use of blockchain in EY's Tesseract fractional vehicle ownership solution. Duncan recently joined EY from the public sector where he was the CTO of Her Majesty's Passport Office. There he transformed IT delivery, moving it from a traditional wholly outsourced model to an internally provided Agile service deploying modern DevOps practices. He was also responsible for developing the cryptography that secures the UK passport and worked on the use of Blockchain for recording travel stamps. Previously, Duncan was the biometrics lead for the UK's ID Cards programme, responsible for the specification and the design of fingerprint and face recognition biometrics for the scheme. Later he applied this technology to passport issuance for detection of fraudulent applications. Duncan has a physics PhD and is a chartered engineer.



## **Susan Winterberg, Associate Director, Inclusive Economy, BSR**

Susan Winterberg leads the Inclusive Economy team at Business for Social Responsibility (BSR), a global non-profit membership organization of sustainability departments of more than 250 multinational companies. Prior to BSR, she was a Research Associate at Harvard Business School, where she studied the social and business impacts of creating good jobs and how companies can best integrate social responsibility practices during restructurings, automation, recessions, factory closures, and offshoring. She was also previously the Practice Lead for Urban Planning & Development at CPCS, a Canadian PPP transaction advisory firm that has implemented projects in transport, power, and urban development in more than 100 developing countries. Susan holds a Masters in Urban Planning from Harvard University Graduate School of Design and a Bachelors of Business Administration in Finance from the University of Cincinnati.

# Attendees

<b>Nabylah Abo dehman</b>	UN Principles for Responsible Investment	<b>Helene Jelman</b>	Goldlake Capital Ltd
<b>Michael Adams</b>	Oceans Asset Institute	<b>Safiya Juma</b>	Vigeo Eiris
<b>Diego Anton</b>	Vigeo Eiris	<b>David Kampmann</b>	CDP
<b>Adam Ashcroft</b>	Vigeo Eiris	<b>Athanasia Karanou</b>	Sustainalytics
<b>Steve Askins</b>	CSR Consulting Ltd	<b>Joshua Kendall</b>	Insight Investment
<b>Janet Barber</b>	Kaleidoscope Research and Policy	<b>Mabinty Koroma-Moore</b>	The Global Impact Investing Network
<b>Jimmy Barenco</b>	IPCM	<b>Cedric Lagrange</b>	MSCI
<b>Stephen Barrie</b>	Church of England EIAG	<b>Sandrine Lalmant</b>	USS
<b>Carl Berthold</b>	JAR Capital Ltd	<b>Maxime Le Floch</b>	Hermes Investment Management
<b>Mark Brentnall</b>	MSCI ESG	<b>Daria Lefortier</b>	S&P DJI
<b>Remy Briand</b>	MSCI	<b>Maria Lettini</b>	FAIRR Initiative
<b>Jocelyn Brown</b>	RPMI Railpen	<b>Michael Lewis</b>	Deutsche Asset Management
<b>Neil Brown</b>	Liontrust Asset Management	<b>Maria Lombardo</b>	CDP
<b>Jack Byerley</b>	Harpsden Wealth Management	<b>Beijia Ma</b>	Bank of America Merrill Lynch
<b>Mais Callan</b>	Impactive Associates	<b>Stephanie Maier</b>	HSBC Global Asset Management
<b>Davide Cerrato</b>	Ethical Screening	<b>Charlotte Mansson</b>	GES
<b>Catherine Chen</b>	UNPRI	<b>Samuel Mary</b>	Kepler Cheuvreux
<b>Tamsin Chislett</b>	ClearlySo	<b>Andrew Mason</b>	Aberdeen Standard
<b>Rosie Clarke</b>	Manifest	<b>Declan McDonald</b>	PwC
<b>Will Close-Brooks</b>	Investing for Good	<b>Neil McIndoe</b>	Trucost, part of S&P Dow Jones Indices
<b>Adam Colling</b>	PRI	<b>Sam Mellor</b>	The Mellor Practice
<b>Gail Counihan</b>	RLAM	<b>Clara Melot</b>	SPOTT
<b>Charlene Cranny</b>	UKSIF	<b>Veronique Menou</b>	MSCI
<b>Daniel Cremin</b>	MSCI	<b>Sara Minchin</b>	WWF
<b>Claire Curtin</b>	Trucost	<b>Fergus Moffatt</b>	UKSIF
<b>Kajetan Czyn</b>	University of Cambridge Institute for Sustainability Leadership	<b>Alex Monk</b>	Schroder Investment Management
<b>Simon Dent</b>	Althelia Ecosphere	<b>Blanca Moreno</b>	CDP
<b>Charles Dodsworth</b>	FTSE Russell	<b>Jorgen Mork</b>	MSCI ESG Research
<b>Andrew Douglas</b>	Columbia Threadneedle Investments	<b>Hiro Nakakura</b>	Bloomberg
<b>Richard Essex</b>	Grayside Ltd	<b>Saori Odera</b>	FTSE Russell
<b>Andreas Feiner</b>	Arabesque Asset Management	<b>Marion O'Donnell</b>	Fidelity International
<b>Carole Ferguson</b>	CDP	<b>Patrick O'Hara</b>	USS IM
<b>Marie Fromaget</b>	Kepler Cheuvreux	<b>Antonios Panagiotopoulos</b>	MSCI
<b>Drew Fryer</b>	Trucost	<b>Bradford Peaston</b>	Said Business School, University of Oxford
<b>Derek Brett Gallo</b>	Dharma Investments	<b>Chris Perceval</b>	S&P Global / Trucost
<b>Sarah Gammoh</b>	Manifest	<b>Alexandra Pinzon</b>	Global Canopy Programme
<b>Federica Giacometti</b>	FTSE Russell	<b>David Pollock</b>	Consilium Capital
<b>Rochelle Giugni</b>	Hermes EOS	<b>Jack Pollock</b>	WWF-UK
<b>Rachel Glendinning</b>	Thrive Renewables	<b>Will Pomroy</b>	Hermes Investment Management
<b>Sarika Goel</b>	Mercer	<b>Hollie Ralston</b>	RBS
<b>Anastasia Guha</b>	PRI	<b>Jo Raven</b>	FAIRR
<b>Nikki Gwilliam-Beeharee</b>	Vigeo Eiris	<b>Julie Raynaud</b>	Kepler Cheuvreux
<b>Nora Hader</b>	Principles for Responsible Investments	<b>Jillian Reid</b>	Mercer Responsible Investment
<b>Ashley Hamilton Claxton</b>	Royal London Asset Management	<b>Iona Richardson</b>	Deutsche AM
<b>Felipe Hawkins</b>	Vigeo Eiris	<b>Jeremy Robinson</b>	Green Stockbroker
<b>Paul Hewitt</b>	Vigeo Eiris	<b>Alexandra Rodrigues</b>	Sustainalytics
<b>Stephen Hine</b>	Vigeo Eiris	<b>Jamie Rosser</b>	RPMI Railpen
<b>Simon Howard</b>	UKSIF	<b>Richard Rust</b>	The Ethical Investment Co O
<b>Anders Jegers</b>	Goldlake Capital Ltd	<b>Varun Sarda</b>	RBS

# Attendees

Panos Seretis	MSCI	Merijn Vegter	Robeco (UK)
Dr Manish Shakhdiptee	MSCI	Chris Vernon	MSCI
Kaori Shigiya	Oxfam	Lidia Wachowska	GES International
David Smith	Trucost DJI	Spychala	
Ellie Stewart	UKSIF	Gary Waite	Alpha: r <sup>2</sup>
Lisa Stonestreet	EIRIS Foundation	Vedant Walia	Barclays
Charlie Sullivan	Robeco	Jonathan Wallace	Jupiter
Martin Summers	GK Strategy	Sonja Wallenborn	Sustainalytics
Leslie Swynghedauw	MSCI	Duncan Westland	Ernst & Young
Jakob Thomä	2 Investing Initiative	Maxine Wille	Hermes Investment Management
Darrell Tovey	Vigeo Eiris	Susan Winterberg	BSR
Bart van der Grient	Robeco	Michaela Zhirova	Janus Henderson Investors
Esme van Herwijnen	Edentree Investment Management	Izabela Zurowska	GES International

**Disclaimer:** This publication should not be taken as financial advice or seen as an endorsement of any particular company or individual. Whilst every effort has been made to ensure the information contained in this document is precise, UKSIF cannot guarantee accuracy.

Printed by Formara on recycled paper

UK Sustainable Investment and Finance Association  
Salisbury House, 29 Finsbury Circus, EC2M 7AQ  
info@uksif.org www.uksif.org 020 7749 9950

Company No: 02541424 Registered in England VAT Registration Number: 726 4659 11

**UKSIF**  
UK Sustainable Investment  
and Finance Association